



MONDAY, SEPTEMBER 15, 2014

[NEWS](#) [FEATURES](#) [SPORTS](#) [OPINION](#) [CLASSIFIEDS](#) [PET OF THE WEEK](#) [OBITUARIES](#)
[CAREERS](#) [SPECIAL SECTIONS](#) [COUPONS](#) [WHAT'S HAPPENIN'](#)
[Welcome!](#) [Login](#) | [Signup](#)

SAMC welcomes People's Choice Hospital at luncheon

[Story](#) [Comments](#) [Image \(1\)](#)
[Print](#) [Font Size:](#)

Posted: Wednesday, December 18, 2013 10:02 am | Updated: 1:47 pm, Mon Dec 23, 2013.

Trisha Maldonado/Douglas Dispatch | [0 comments](#)

Posted on Dec 18, 2013
by [Trisha Maldonado](#)

People's Choice Hospital held a luncheon at Southeast Arizona Medical Center to introduce themselves to the staff and community of Douglas on December 11.

Vice President of Finance Christopher Alise began by thanking everyone for taking the time out of their busy schedules and attending the luncheon.

"We are really excited to for the opportunity to work with everyone, to rebuilding this hospital back to a position of strength in the community," Alise said. "We understand that it is really important for each of you in terms of your livelihood, your families, obviously your healthcare and we want to work with everyone to build back up the services."

Alise also said that he would like to be able to keep all of the expert medical care here in the community.



Trisha Maldonado/Douglas Dispatch

SAMC welcomes People's Choice Hospital at luncheon

Lucinda Spikes introduced PCH's Christopher Alise, Darien Cohen and Lori Lehman to the staff of SAMC. PCH has submitted a bid to purchase the hospital which will be finalized mid-January

"So that all of you can come here for what you need were you don't have to drive the distance to other areas to get the care we are confident we can provide for you

 [search](#)

SUBMIT YOUR NEWS!

We're always interested in hearing about news in our community. Let us know what's going on!

[Submit news](#)

[Homes](#) [Jobs](#)

HOMES

4 bdrm 1.5 bath 818 8th st storage section

[Updated: September 11](#)

3 Bdrm. 1 Bath. 847-14th Will consider

here,” he added.

PCH plans to grow services at SAMC they also plan to reach out to the community on a variety of levels. “We want to be partners in the community, our goal is to build the Douglas hospital back to what we think it can be and be involved with it long term,” Alise said.

When asked if he thought building up the hospital back would be possible Alise’s reply was, “Yes, we wouldn’t be here otherwise.”

Alise and his staff have been very impressed by the commitment and loyalty of the staff.

“There a lot of opportunities here that have not been addressed and we would like to do that,” he said.

December 11 was also the day Mrs. Annie Benson SAMC’s CEO was in bankruptcy court in Tucson filing the paperwork for the sale of the hospital.

According to court documents the sale to PCH will not be finalized until mid-January.

PCH is able to leverage strategic financial investment to improve all facets of distressed hospital operations. They provide high-quality, expedient, customer service-oriented medical care by streamlining hospital operations and clinical workflow.

[Discuss](#)
[Print](#)

Posted in [News](#) on *Wednesday, December 18, 2013 10:02 am.* *Updated: 1:47 pm.*

Similar Stories

- 9/11 ‘time heals all wounds’
- CBP conducts readiness exercise
- DFD to hold 9/11 memorial Thursday
- City council meeting tonight
- Douglas CBP officers seize 200 pounds of marijuana

Most Read

- 2014 China Poblans selected
- Douglas CBP officers seize 200 pounds of marijuana
- CBP conducts readiness exercise
- 9/11 ‘time heals all wounds’
- Bulldogs come up short in 15-14 loss to Rio Rico

Welcome to the discussion.

Screen Name or Email

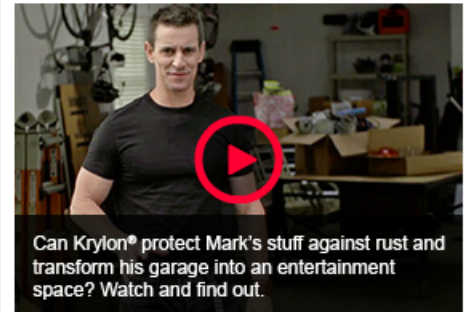
Password

[Forgot?](#)
[Login](#)

Or

Section 8 must

Updated: September 11

[More Homes](#)


SCROLL TO VIEW MORE PROJECTS



METAL TOOL CABINET

> See project



METAL BAR STOOLS

> See project

> Go to Krylon Spraydown

One listing.
Hundreds of
calendars.

More shareable and likeable

Douglas Dispatch

Add an event >